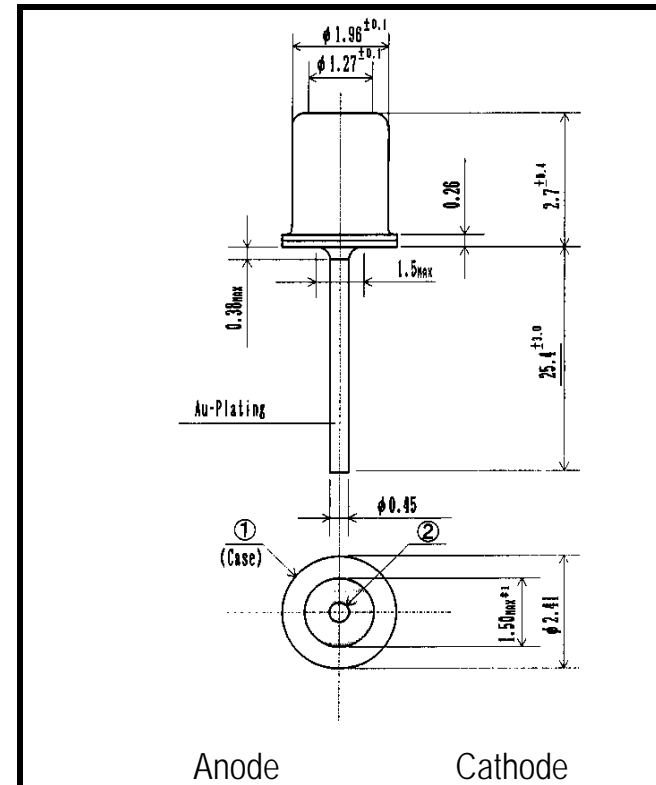


# LSB884FT-550G

# Point Source LED



- FEATURES**
- Point-source LED
  - Emitting Window Dia. 50  $\mu$ m
  - High-output Power
  - Spot Beam
- APPLICATIONS**
- Linear & Rotary Encoder (Measuring System)
  - Edge Sensing (Coin Dispenser)
  - Optical Communications

## 1. ABSOLUTE MAXIMUM RATINGS (Ta=25 )

ITEM	SYMBOL	RATINGS	UNIT
Forward Current (DC)	IF	65	mA
Forward Current (Pulse)*1	IFP	0.4	A
Reverse Voltage	VR	5	V
Power Dissipation	PD	130	mW
Operating Temp.	Topr	-25 TO 85	
Storage Temp.	Tstg	-30 TO 100	
Junction Temp.	Tj	100	
Lead Soldering Temp.*2	Tls	260	

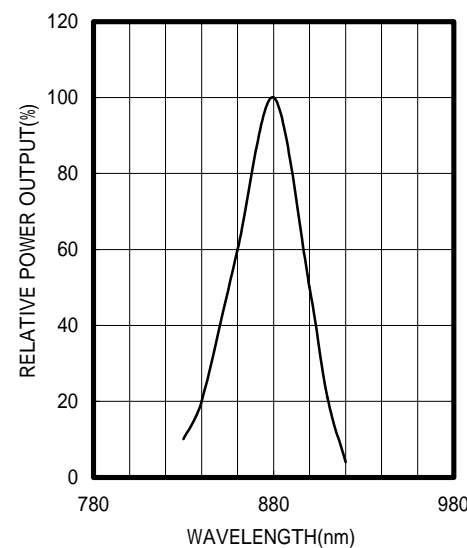
\*1:Tw=10uS,T=10mS

\*2:Time 5 Sec max,Position:Up to 3mm from the body

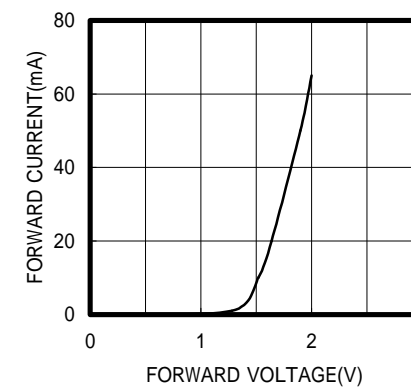
## 2. ELECTRICAL & OPTICAL CHARACTERISTICS (Ta=25 )

ITEM	SYMBOL	CONDITIONS	MIN	TYP	MAX	UNIT
Power Output	PO	IF=50mA	2.5	3.5		mW
Forward Voltage	VF	IF=50mA		1.9	2.4	V
Reverse Current	IR	VR=5V			10	$\mu$ A
Peak Wavelength	$\lambda$	IF=50mA	850	880		nm
Spectral Line Half Width		IF=50mA		40		nm
Half Intensity Beam Angle		IF=50mA		$\pm 6$		deg.
Band Width	fc	IF=50mA+20mAp-p		20		MHz
Junction Capacitance	Cj	1MHz ,V=0V		40		pF
Temp. Coefficient of PO	P/T	IF=10mA		-0.05		%/
Temp. Coefficient of VF	V/T	IF=10mA		-2.3		mV/

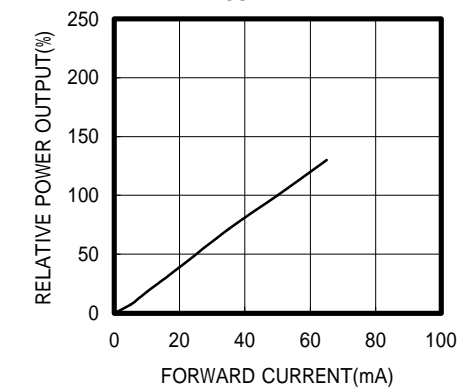
SPECTRAL OUTPUT



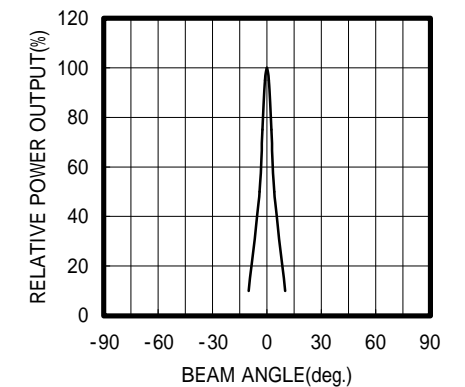
FORWARD I-V CHARACTERISTICS



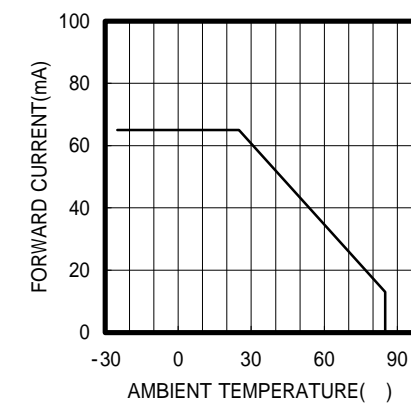
RELATIVE POWER vs FORWARD CURRENT



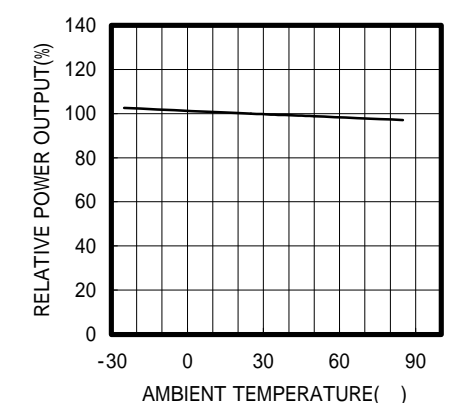
RADIATION PATTERN



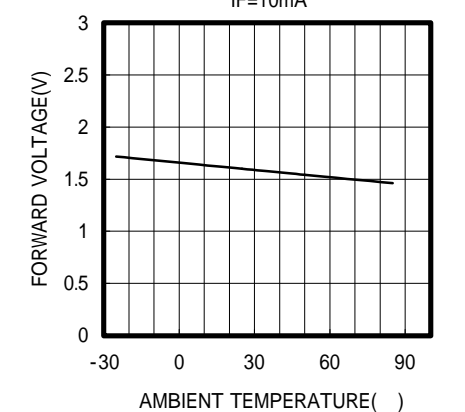
THERMAL DERATING CURVE



POWER OUTPUT vs TEMPERATURE IF=10mA



FORWARD VOLTAGE vs TEMPERATURE IF=10mA



OPTRANS

2-6-11 MASUKATA, TAMA-KU, KAWASAKI 214-0032, JAPAN  
 TEL.81(44)932-6491 / FAX.81(44)932-8281  
 E-mail optrans@mb.kcom.ne.jp